

Sprague Carrier

Do not discard packaging until product has been successfully installed.



SuperATV recommends changing Differential Fluid since Differential is being serviced

Liability Statement

SuperATV's[®] products are designed to best fit user's ATV/UTV under stock conditions. Adding, modifying, or fabricating any factory or aftermarket parts will void any warranty provided by SuperATV[®] and is not recommended. SuperATV's[®] products could interfere with other aftermarket accessories. If user has aftermarket products on machine, contact SuperATV[®] to verify that they will work together.

Although SuperATV[®] has thousands of satisfied customers, user should be aware that installing lift kits, long travel, or suspension kits, tires, etc. will change the ride of machine and may increase maintenance and part wear. Operating any off-road machine while, or after, consuming alcohol and/or drugs increases risk of bodily harm or death. No warranty or representation is made as to this product's ability to protect user from severe injury or death. SuperATV[®] urges operators and occupants to wear a helmet and appropriate riding gear at all times.

By purchasing and installing SuperATV[®] products, user agrees that should damages occur, SuperATV[®] will not be held responsible for loss of time, use, labor fees, replacement parts, or freight charges. SuperATV[®], nor any 3rd party, will not be held responsible for any direct, indirect, incidental, special, or consequential damages that result from any product purchased from SuperATV[®]. The total liability of seller to user for all damages, losses, and causes of action, if any, shall not exceed the total purchase price paid for the product that gave rise to the claim.

SuperATV[®] will warranty only parts provided by SuperATV[®]. Any damage or problems with OEM housings, bearings, seals, or other manufacturers' products will not be covered by SuperATV[®]. SuperATV[®] parts and products are not warranted if item was not installed properly, misused, or modified.

Installing, adding, modifying, or fabricating any factory or aftermarket product to your ATV/UTV may violate certain local, state, and federal laws. Be advised that laws vary depending on town, city, county, state, etc. Use of certain products on public streets, roads, or highways may be in violation law. The Buyer is solely and exclusively legally and personally responsible for any violation of the law by the installation or use of the product. You must abide by all local, state, and federal laws, including but not limited to vehicle safety, traffic laws, and ordinances. It is your responsibility to know the laws and how they apply to you.

The Buyer is responsible to fully understand the capability and limitations of his/her vehicle according to manufacturer specifications, warnings and instructions and agrees to hold SuperATV[®] harmless from any damage resulting from failure to adhere to such specifications, warnings and/ or instructions. The Buyer is also responsible to obey all applicable federal, state, and local laws and ordinances when operating his/her vehicle while using this product, and the Buyer agrees to hold SuperATV[®] harmless from any violation thereof.

Need help with your installation?



sales@superatv.com



www.superatv.com



1-855-743-3427



8:00am - 8:00pm EST M-Th
8:00am - 7:00pm EST Friday
9:00am - 2:00pm EST Saturday

Read instructions and view illustrations before beginning.

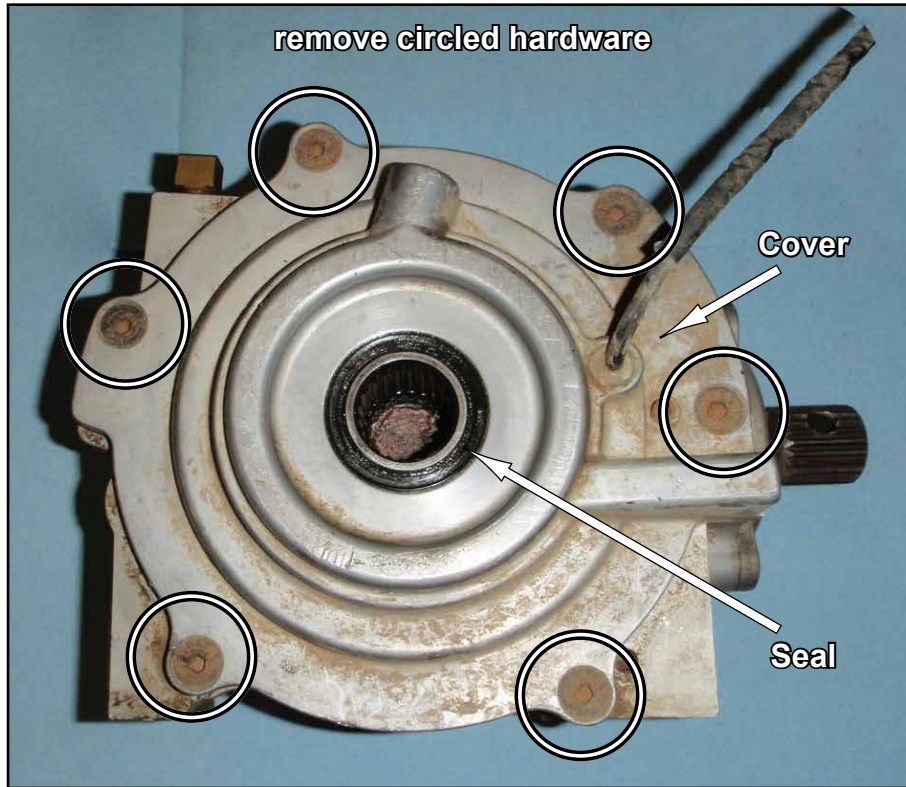
Thank You

For Choosing

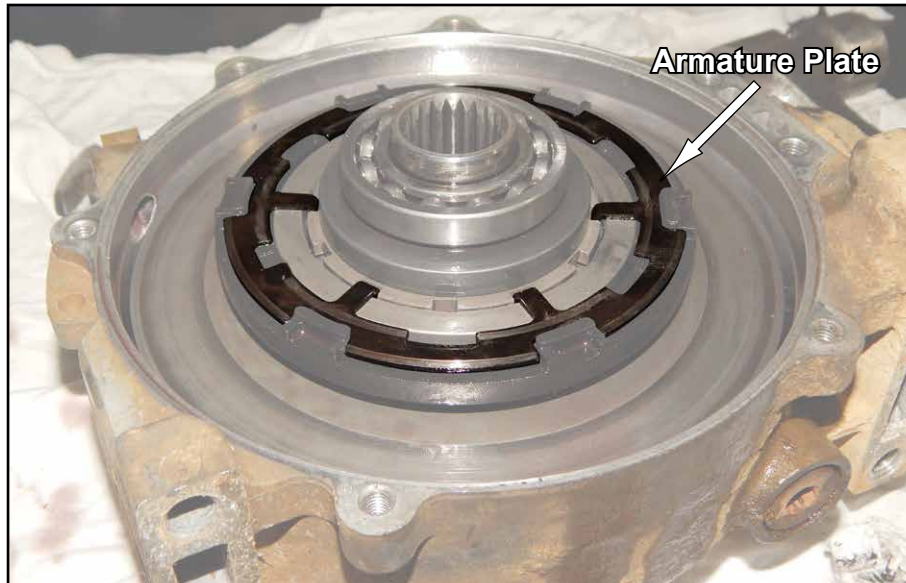


Stock hardware will be reused. Do not discard.

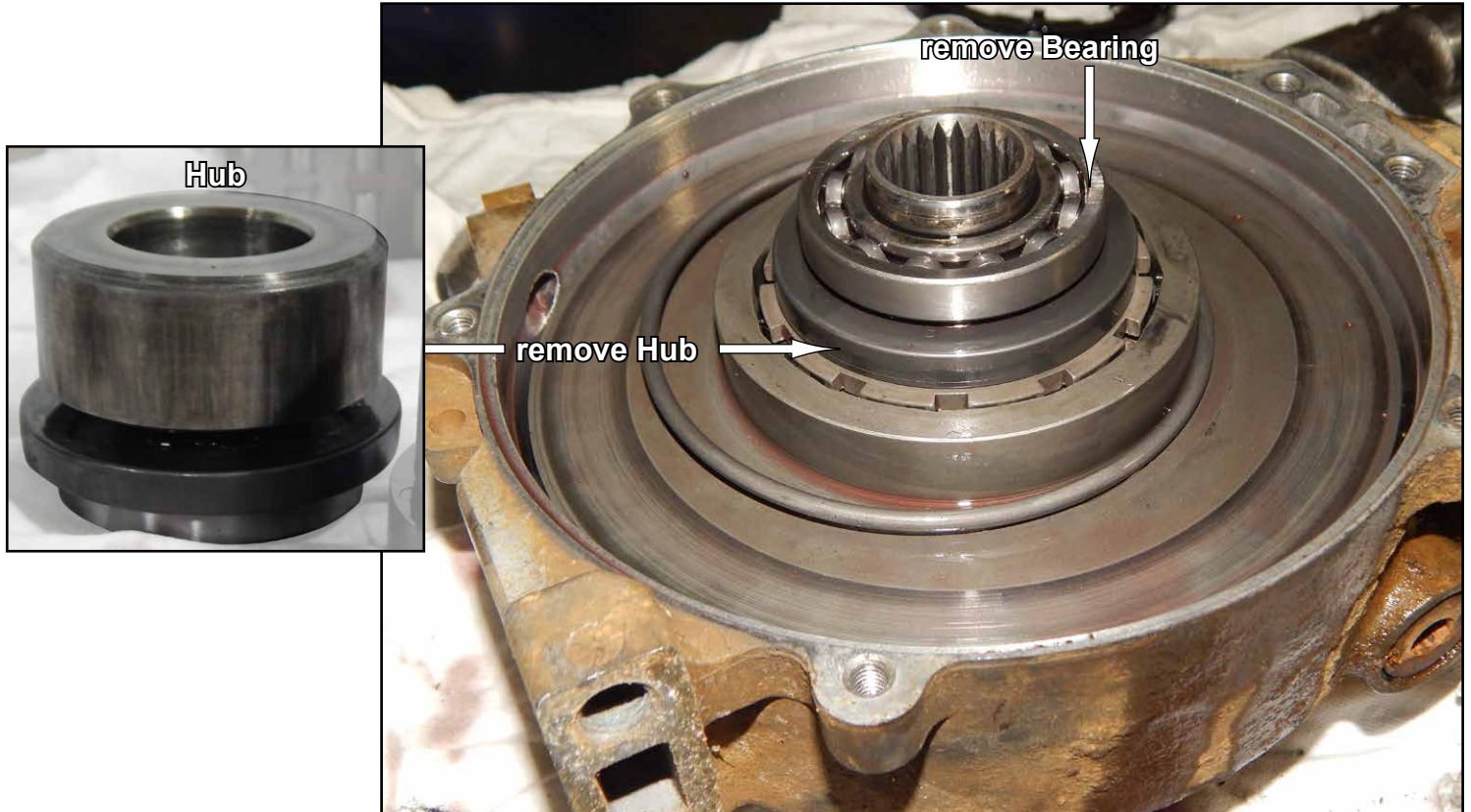
1. Remove Front Differential from machine and all dirt/grease from outside of Differential. Place on a clean working surface.
2. Remove hardware securing Cover to main body of Differential.
3. Carefully remove Cover and Seal.



Note: Armature Plate may stick to Cover or stay in main body. If Armature Plate stays in main body, remove and set aside.



4. Remove Bearing and Hub from Differential. Components should come out as one; set aside.



5. Remove Sprague Carrier. If Carrier has failed, gather all Rollers and Springs from inside Differential; disassemble and clean Differential. If Carrier has **not** failed, then slowly remove. *Note: When removing, Rollers will fly out due to spring tension. Place hands around Sprague Carrier to keep contained.*



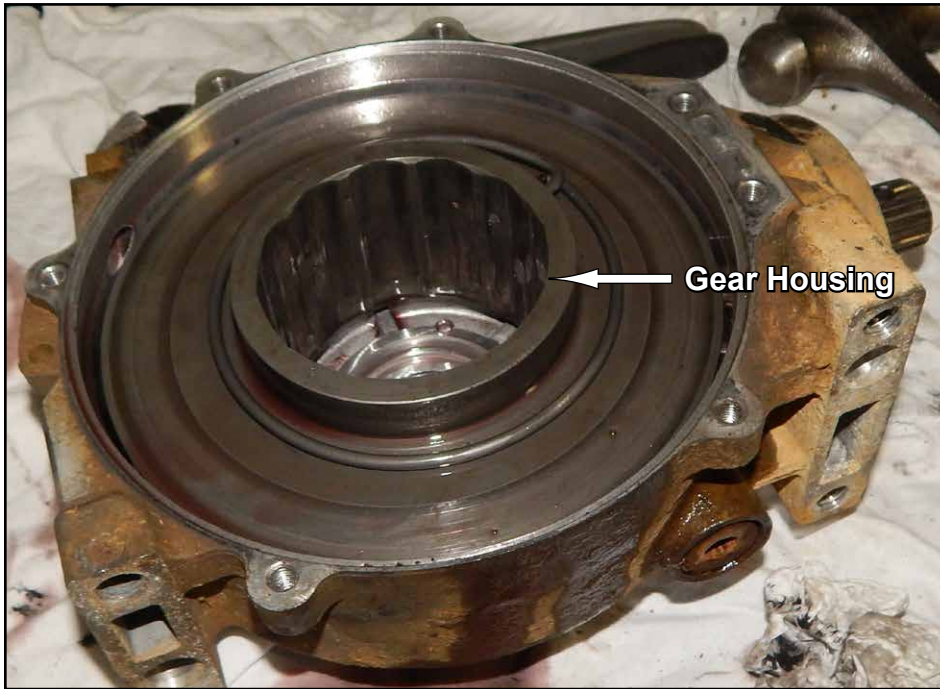
6. If required, remove Springs from stock Carrier using a small screwdriver or pick.
- Springs will need to be slightly bent back together before installation into new Sprague Carrier, once bent, snap into place. **Use caution and do not use excessive force when bending Springs; they can and will break.**

see following page if stock Rollers and Springs are being reused

8. Install new Sprague Carrier into Differential:



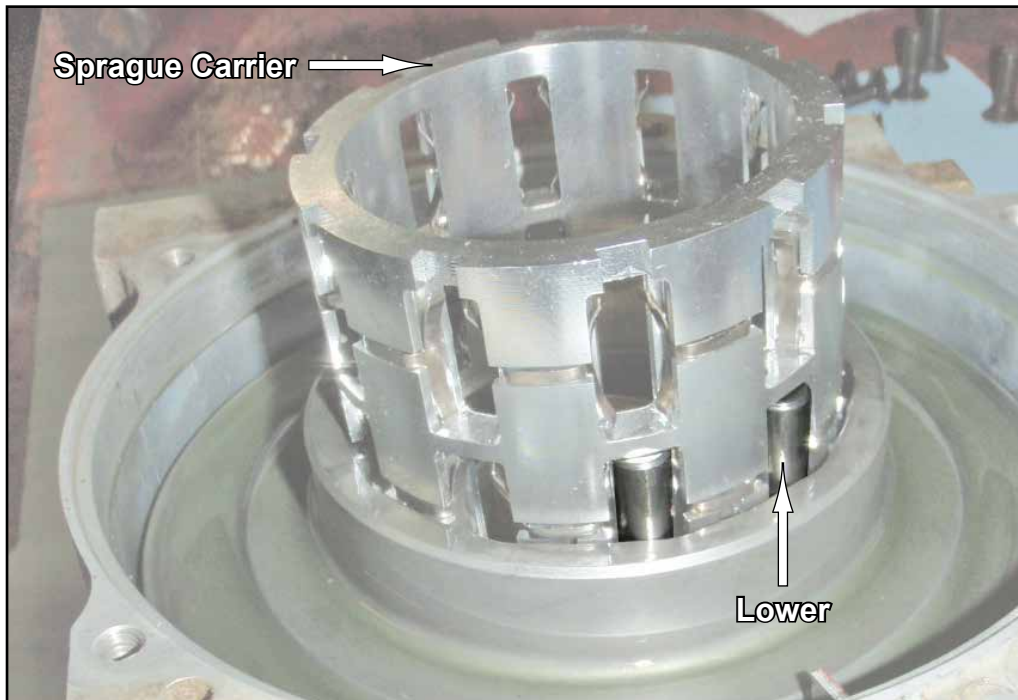
- Place Sprague Carrier on Gear Housing.
- Center Sprague Carrier.
- Push Sprague Carrier out of Plastic Sleeve and into Gear Housing; discard Plastic Sleeve.



stock Rollers and Springs reuse

8. Install Sprague Carrier into Differential:

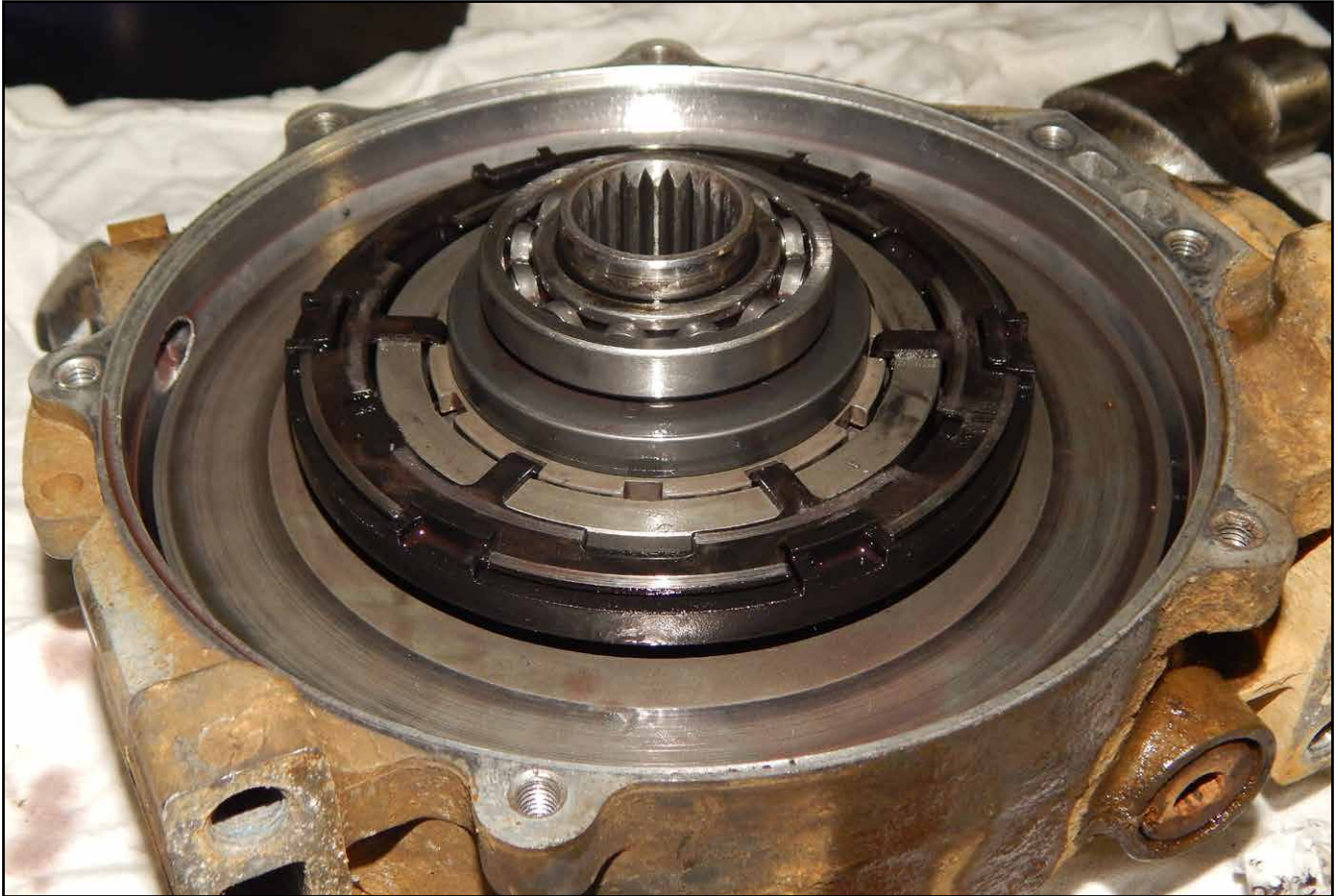
- Pull Sprague Carrier out until Lower Roller Pockets are half exposed and install Rollers around Sprague Carrier; **use caution and do not let installed Rollers fall out.**



- After Lower Rollers are installed, slide Sprague Carrier down and repeat for Upper Roller Pockets.



9. Reinstall Hub, Bearing, and Armature Plate.



10. Refill Differential Fluid or change at this time. Inspect O-Ring on Differential Cover for damage and correct if necessary.

11. Reinstall Cover; tighten Allen Head Bolts in a star pattern.

12. Reinstall Differential to machine.