



XDP Ford 6.7L Coolant Filtration System
Item Number: XD192

PACKING LIST:

- 1 – XDP Filter Base
- 1 – Donaldson P554685 Coolant Filter
- 1 – Mounting Bracket & Hardware
- 1 – Coolant Supply Line (90° Fitting)
- 1 – Coolant Return Line (Tee Fitting)
- 1 – Short Coolant Line
- 1 – Aluminum Tube
- 1 – Aluminum Hex Block
- 2 – Hex Socket Plugs
- 1 – Barbed Fitting
- 3 – Hose Clamps
- 1 – Thread Seal Tape



Before removing any parts from your truck, please compare the items you have received with the packing list provided to verify that you have everything necessary to install your XDP Ford 6.7L Coolant Filtration System.



Ensure that the vehicle has not been in use and that the engine is cool to the touch. Always wear eye protection when working on any vehicle.

INSTALLATION INSTRUCTIONS

Step 1: Remove the driver side coolant overflow tank cap. (Figure A)

Step 2: Drain approximately 3 gallons of coolant from the primary cooling system. (This coolant drain is located on the bottom, driver side, of the radiator.)

Step 3: Using the supplied thread seal tape, go over all of your threads to ensure the kit has a proper seal.

Step 4: Attach the mounting bracket to the XDP filter base using the supplied hardware. (Figure B)

Step 5: Install the supply hose, return hose and hex plug into the XDP filter. The hex plug is threaded into the side of the filter base closest to the "X" in the logo. The supply hose, with the 90° fitting, threads into the front of the filter base below the "XDP" logo. The return hose, with the tee fitting, is threaded into the side of the filter base closest to the "P" in our logo. (Figure C)

Step 6: Install the fully assembled filter base to the driver side cowl where the ground strap is located. Remove the factory bolt and ground strap. Mount the base using the same factory bolt, supplied lock washer and nut. Be sure that the ground strap is reattached. (Figure C)

Step 7: Thread the aluminum tube into the hex block and tighten.

Step 8: Using a 19mm deep socket, remove the Engine Coolant Temperature (ECT) sensor from the coolant crossover. The sensor is located on the driver side of the engine in the coolant crossover. You will find the sensor above the coolant pump and next to the thermostat housing. (Figure D)

Step 9: Thread the hex tube assembly into the area the ECT was located. Using a wrench, tighten the assembly until one of the three open ports is facing directly towards the rear of the truck. **WARNING: DO NOT OVERTIGHTEN THE ASSEMBLY, THIS WILL DAMAGE YOUR COOLANT CROSSOVER.** (Figure E)

Step 10: From the front of the truck, thread the hex plug into the opening facing the rear, thread the barbed fitting into the opening on left and thread the ECT sensor into the opening on the right. Reconnect the ECT sensor wiring. (Figure E)

Step 11: Connect the supply hose, the line from the front of the filter base, to the open barbed fitting on the hex block. Secure the line using one of the supplied hose clamps. (Figure E)

Step 12: Route the return hose from the filter base to the front of the overflow tank. Remove the factory hose from the tank and insert the tee fitting into the factory hose using the factory clamp. Install the supplied short section of coolant hose in-between the tee fitting and the tank using the supplied hose clamps. (Figure F)

Step 13: Lubricate the seal and install the Donaldson P554685 Coolant Filter onto the filter base.

Step 14: Refill the coolant system back to Ford Specifications.

Step 15: Inspect for any leaks and top off the coolant as needed.

Figure A



Figure B

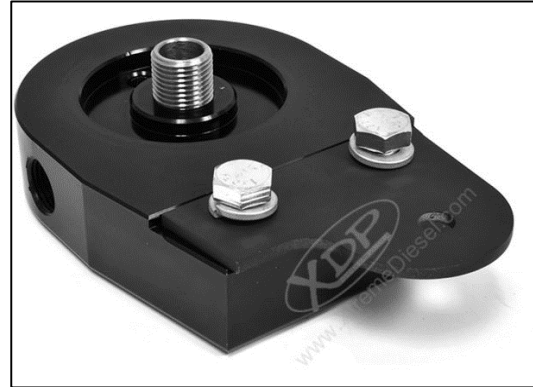


Figure C



Figure D



Figure E

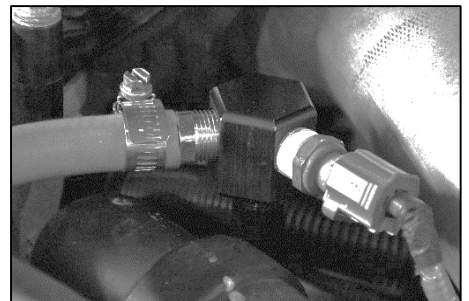
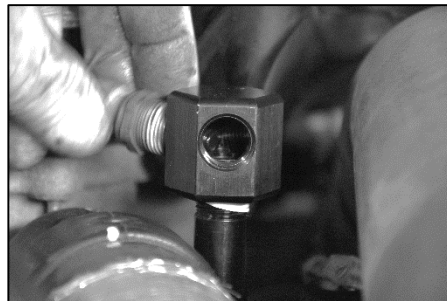


Figure F

